



Pursuing High Grade Silver-Lead-Zinc CRD Deposits in the Emerging Rancheria Silver District, Yukon and Northern British Columbia, Canada

Corporate Presentation
Mines and Money Miami Conference
February 24, 2023

TSX-V: CMB PKI: CMCXF FWB: ZM5N

Forward Looking Statements

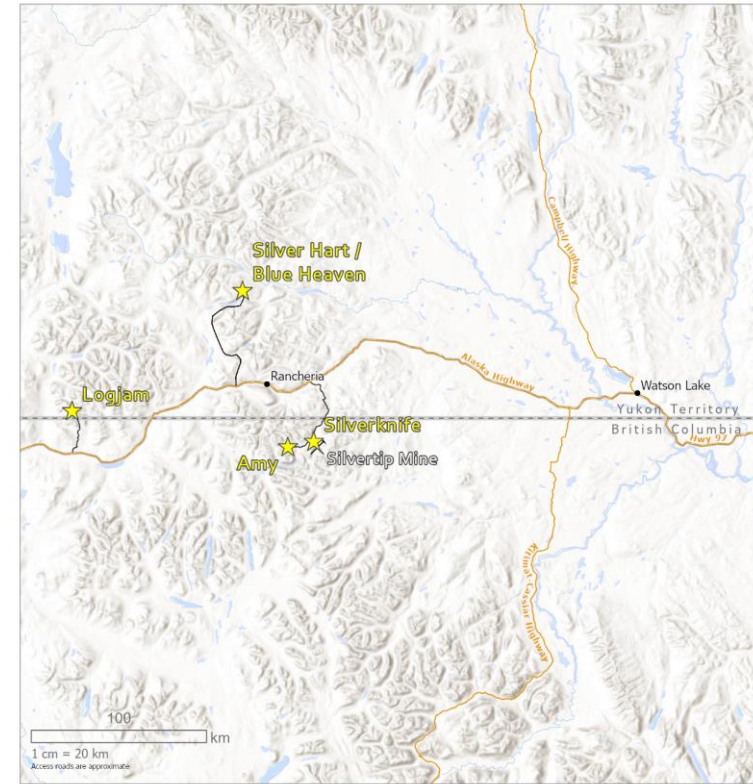
Certain statements included in this presentation are forward-looking statements within the meaning of Canadian securities laws, including statements regarding the Company's properties in Yukon, British Columbia and Newfoundland, as well as Claims and Land: Statements pertaining to the ability of CMC Metals Ltd. ("CMC") to acquire additional joint venture concessions with potential resources; the potential to develop resources and then further develop reserves; the anticipated economic potential of the concession; the availability of capital and finance for CMC to execute its joint venture commitments and strategy going forward. Forward-looking statements are based on estimates and assumptions made by CMC in light of its experience and perception of current conditions and expected future developments, as well as other factors that CMC believes are appropriate in the circumstances. Many factors could cause CMC's results, performance or achievements to differ materially from those expressed or implied by the forward looking statements, including: discrepancies between actual and estimated results from exploration and development and operating risks, dependence on early exploration stage concessions; uninsurable risks; competition; regulatory restrictions, including environmental regulatory restrictions and liability; currency fluctuations; defective title to mineral claims or property and dependence on key employees. Persons reviewing this presentation are cautioned not to place undue reliance on forward-looking statements due to inherent uncertainty therein.

CMC disclaims any intention or obligation to update or revise any forward-looking statements, whether as a result of new information, future events or otherwise, except as required by law.

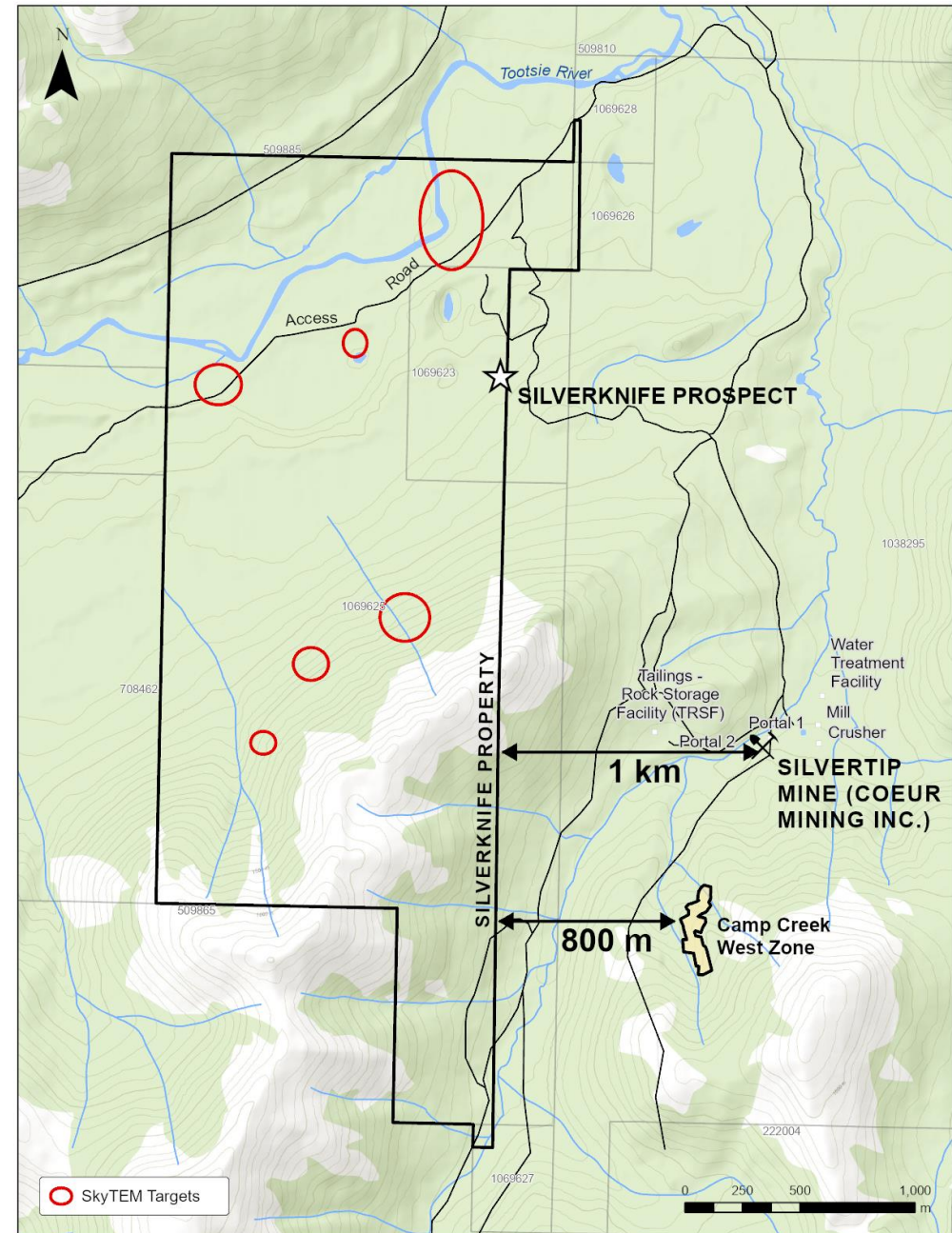
Why Buy CMC Metals Ltd. TSX-V: CMB?

- High-Risk High-Reward Play
- Excellent positioning in an Emerging and Underexplored Silver District in Canada
- Projects Based on Good Science and Lots of Homework
- Pipeline Model of advancing projects continuously from early stage to drill-ready provides project contingencies
- We do what we say we are going to do

Property Locations in Canada



Silverknife, B.C., Canada – Location Map



Understanding our
Neighbors is Key to
CMC's Exploration
Efforts at Silverknife



Our Target in the Emerging Rancheria Silver District – Find Another Silvertip Mine

The Silvertip Mine (Coeur Mining Ltd.)

“The Silvertip silver-zinc-lead mine is one of the highest-grade silver-zinc-lead underground mines in the world and sits within a prospective land package”

(Coeur Mining, 2020)

What Has Coeur been Doing and Saying?

Aoife McGrath – Senior VP –
Exploration

The resources at Silvertip are now considered to be a **“likely small part of a larger mineralizing system”**...in the “there is evidence that the **resources outlined to date are only one of several potential mineralizing spokes...**”



What Has Coeur been Doing and Saying?

- Aoife McGrath – Senior VP – Exploration
- “...**we firmly believe Silvertip has the possibility to be a much larger resource and be a future source of high growth for the Company**”



SilverTip Mine

Grades – 2019 Resource Estimate

- 289 g/t Ag, 5.6% Pb and 8.24% Zn

Proven and Probable Reserves:

- 14.6M oz Ag, 296Mlbs Zn, 193.2Mlbs Pb

(Source: Coeur Mining Inc. NI 43-101, 2019)

Significant Resource Expansion Underway – 250,000 meters of drilling expected 2023-2025

Since 2017, exploration investment at Silvertip has nearly tripled the measured and indicated resource base

Recent FT Financing to raise \$25M



Silvertip Exploration Model

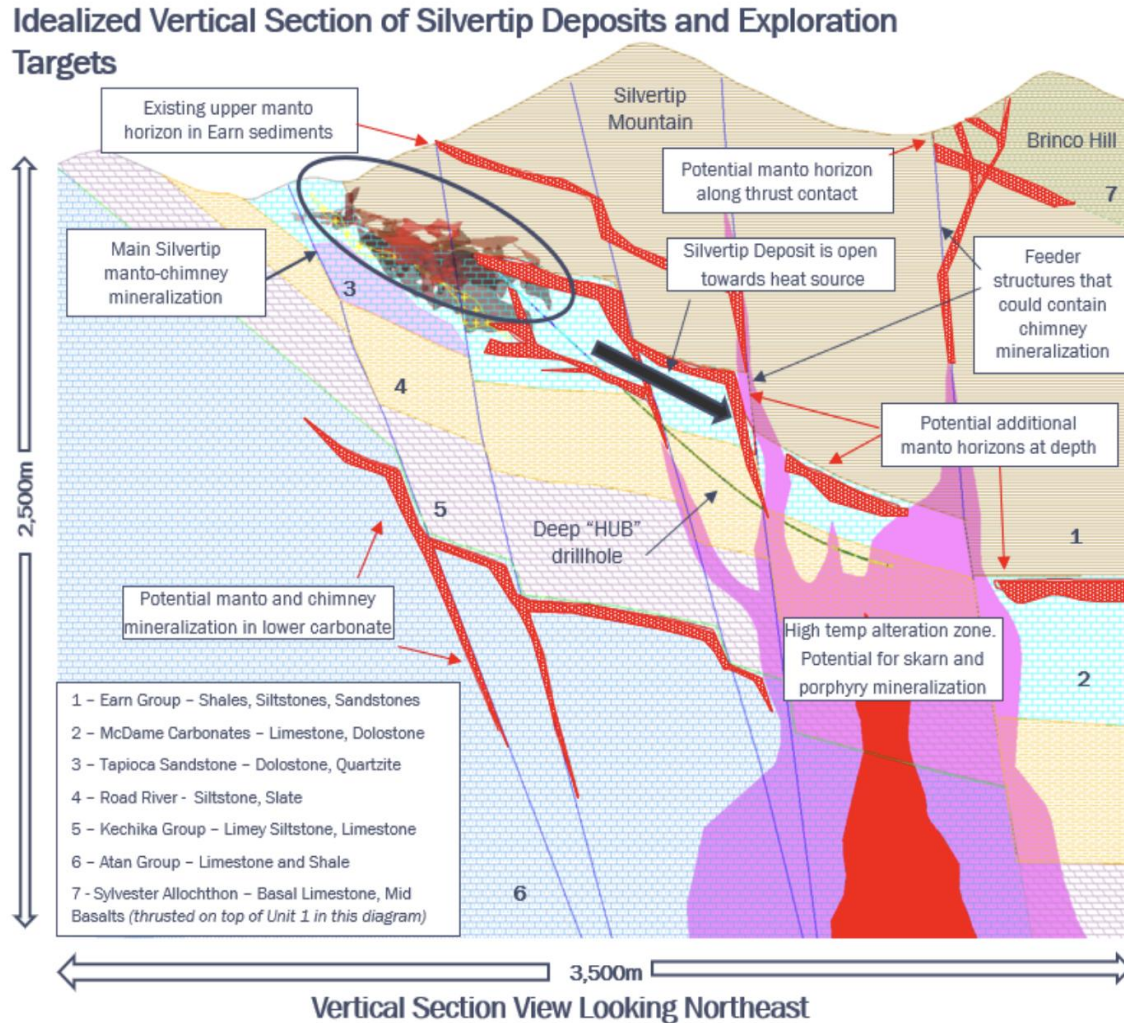


Figure 3: Idealized cross section of the Silvertip deposit showing the multiple exploration target types and the 2,500 meters of prospective stratigraphy, through the McDame Limestone, Tapioca Sandstones and Dolostones and into the Atan Group Limestone.

- A recent deep “HUB” drill hole confirmed a high temperature, alteration mineral assemblage and allowed for a new robust conceptual exploration model.

- Multiple Target Types:
 - Multiple horizons for manto mineralization hosted in the McDame, Earn and Atan Groups.
 - Skarn mineralization
 - Deep porphyry mineralization near the heat source

(Source: Coeur Mining, 2023)

Geophysical Signature and Deposit Extent At Silvertip

Conductivity – High to Moderate and belt is linked to Silverknife

Mineralization – Projected over Strike length in excess of 3.5 km and remains open

Drilling - mineralization in manto and chimneys extends below the McDame limestone

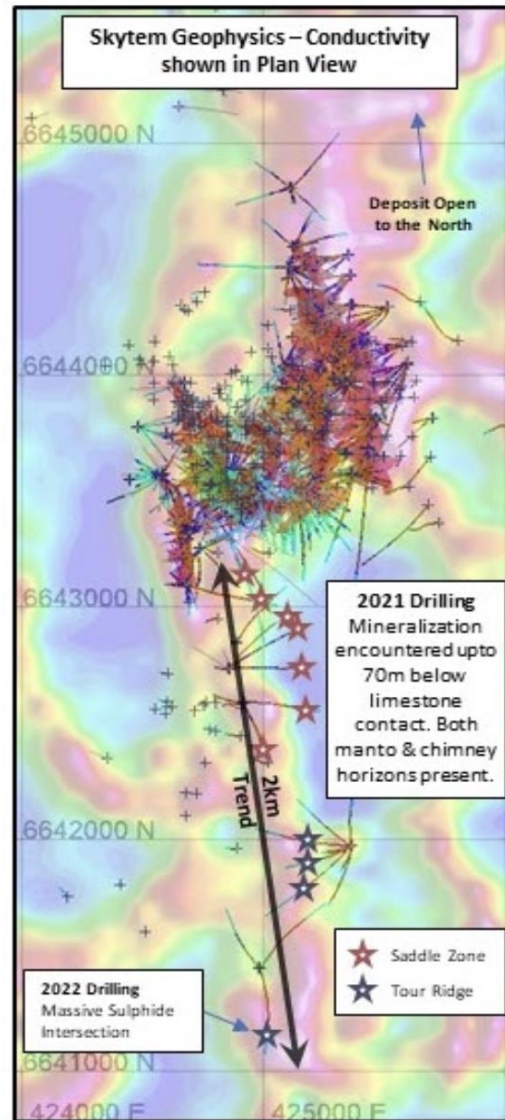
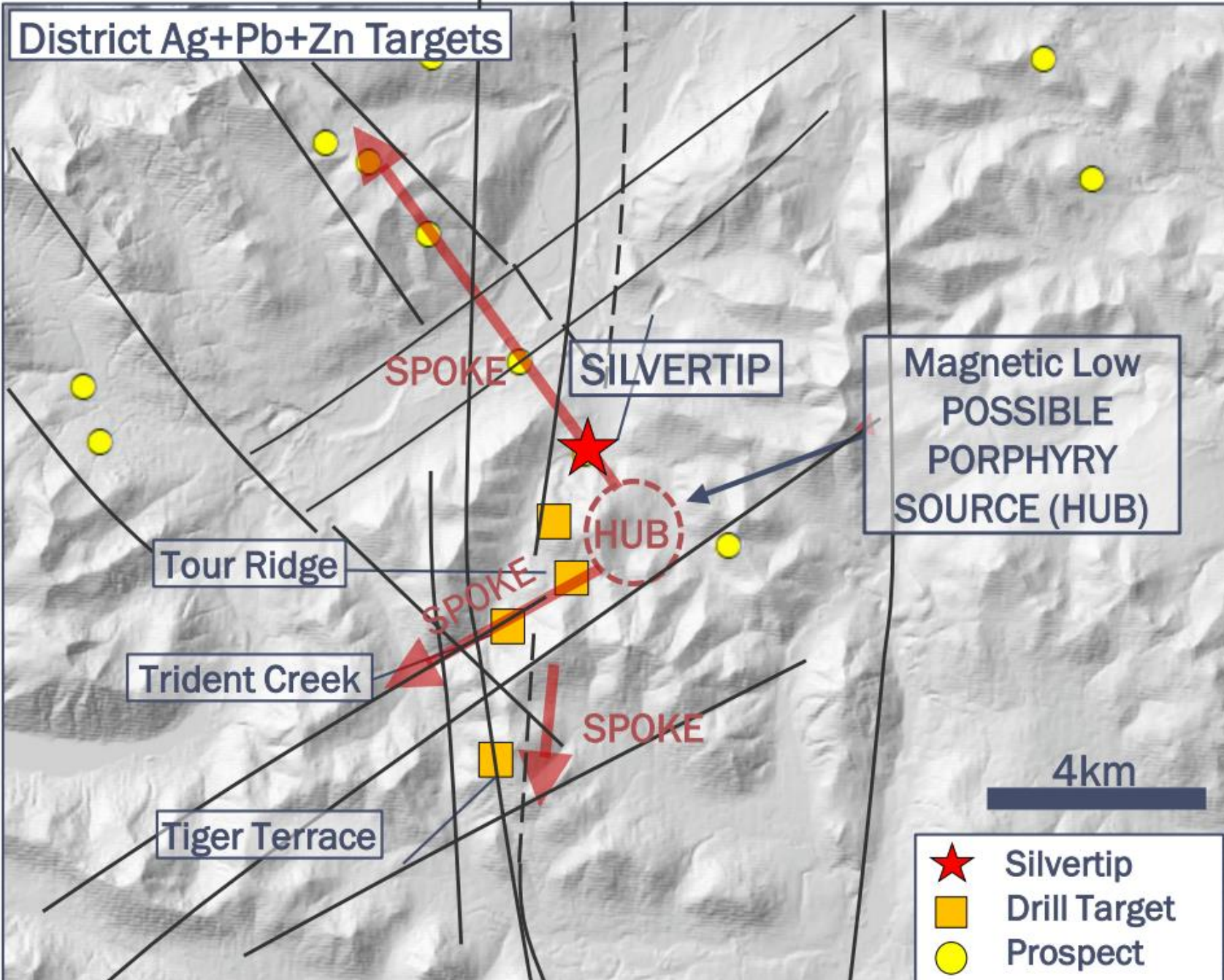


Figure 4: Mineralized intersections from 2021-2022 scout drilling overlain on geophysics.



Hub and Spoke Model

(After Couer Mining, December 15, 2022 Presentation)

The Silverknife Prospect and the Gravity Target sits on one of the main spokes and within a northeasterly structural corridor

What Has Coeur been Doing and Saying?

Major Commitments to the Advancement of Silvertip

- 45% of exploratory drilling committed to the Silvertip Project for 2023-25
 - 150,000 meters of underground drilling
 - 100,000 meters of surface drilling
- Consideration to expand mill from current 1,000 tpd up to 3,750 tpd



Project Background – Silverknife Prospect

Historical Drilling – Silverknife Prospect

362,880 tonnes – no grade

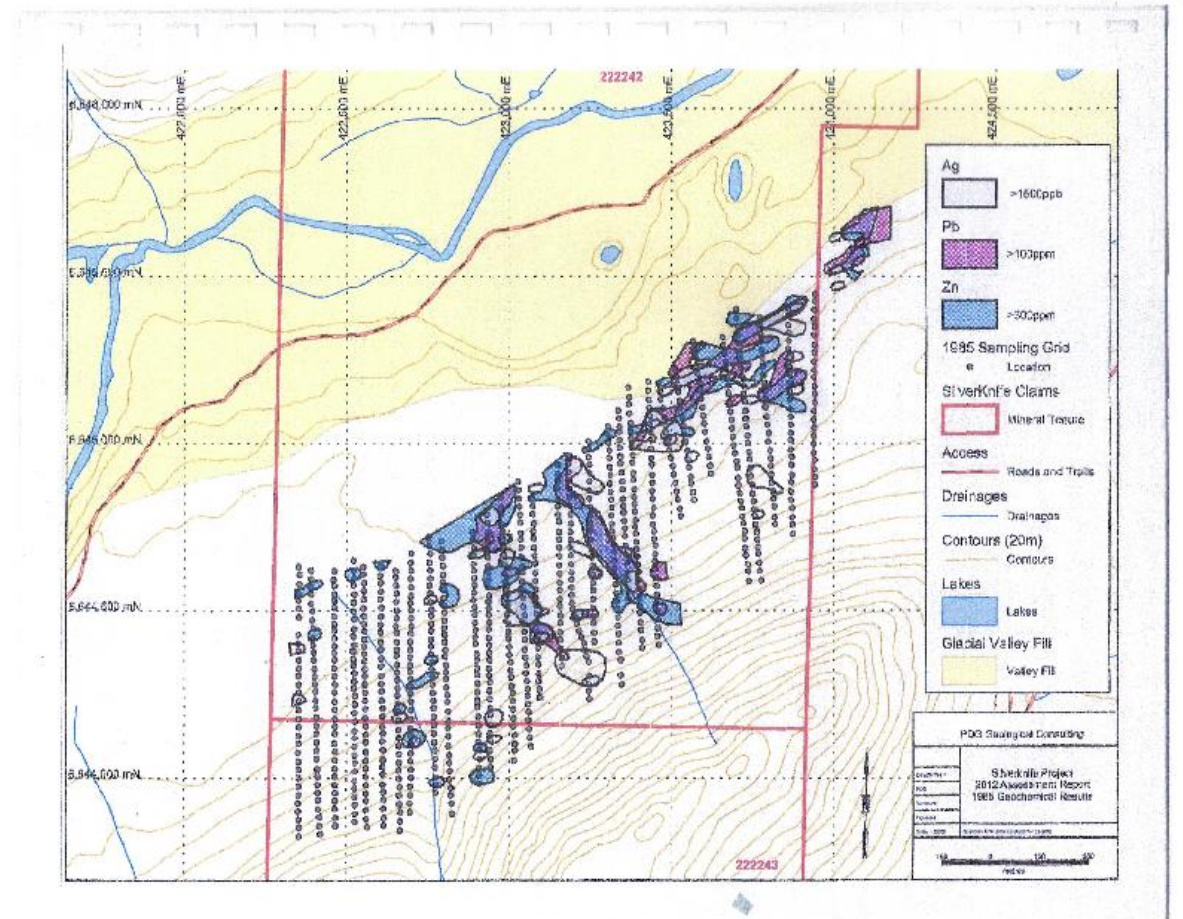
Weighted assay average values of 511 g/t Ag, 3.7 g/t Au, 12.5% Pb and 4.8% Zn

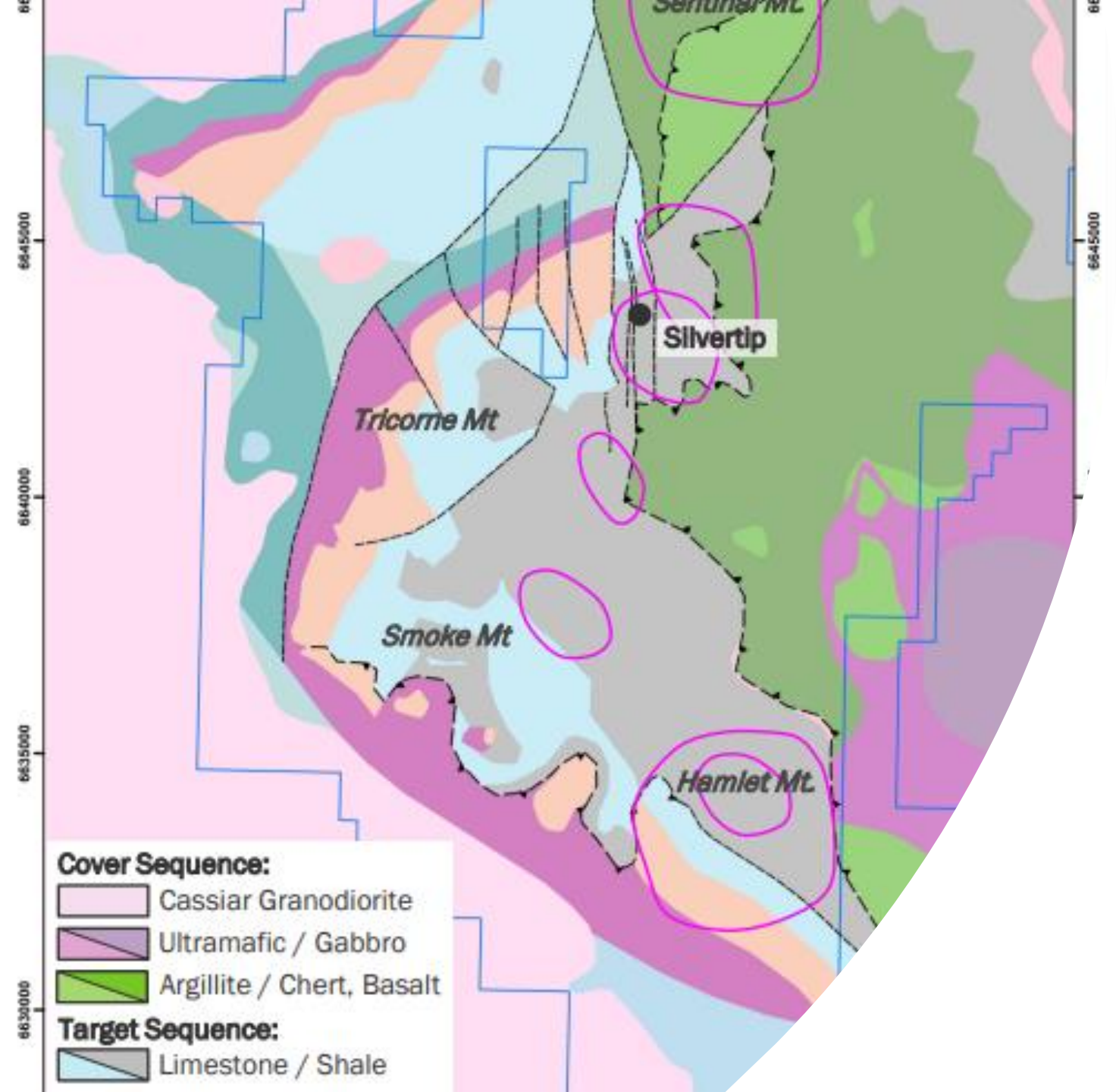
CRD's form in clusters



Project Background - Geochemistry

- Four extensive anomalies from over 900 samples
- Drainages are from prospective geology – McDame Formation – the host rock of the SilverTip deposit
- Additional geophysical and geological data



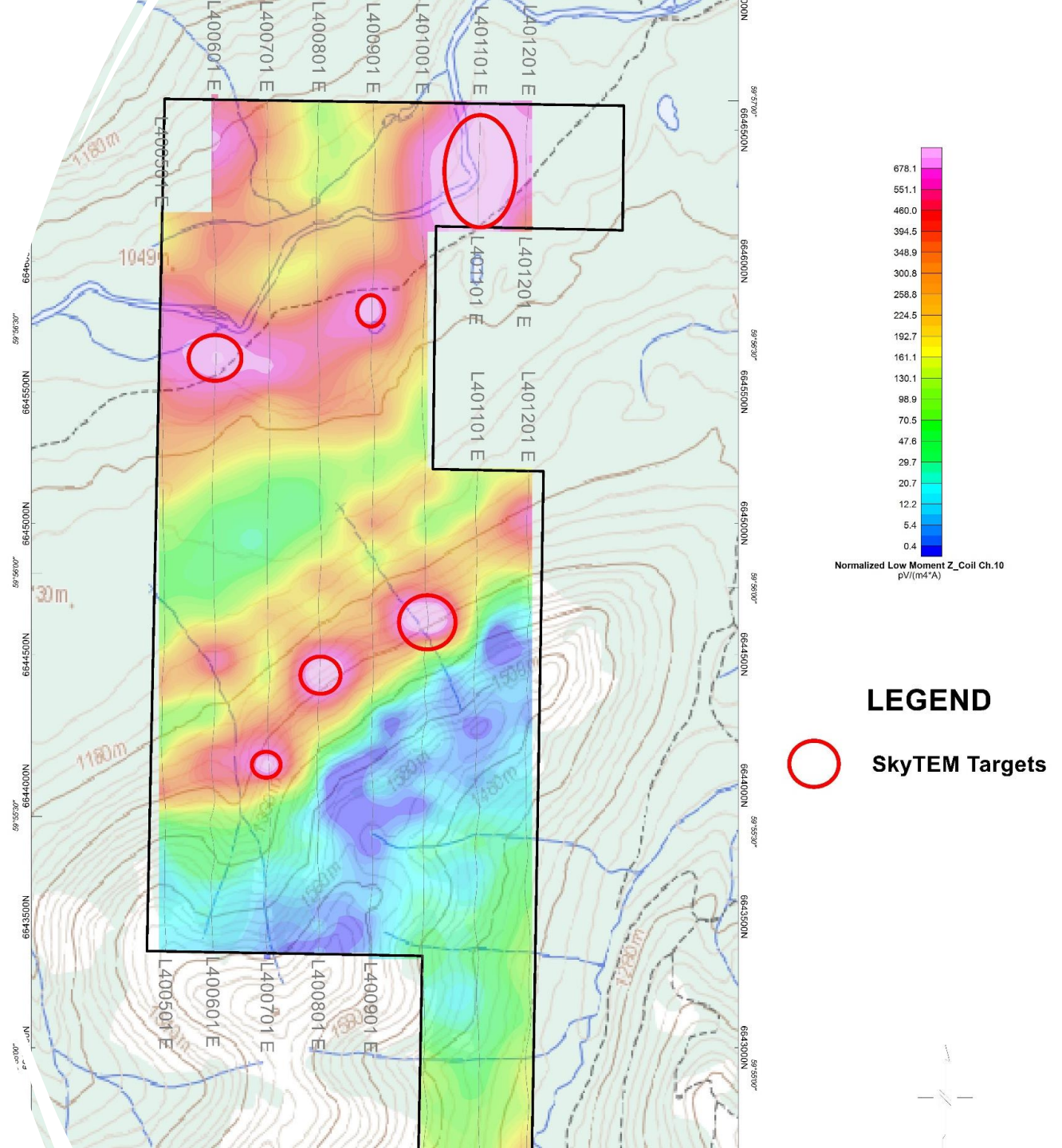


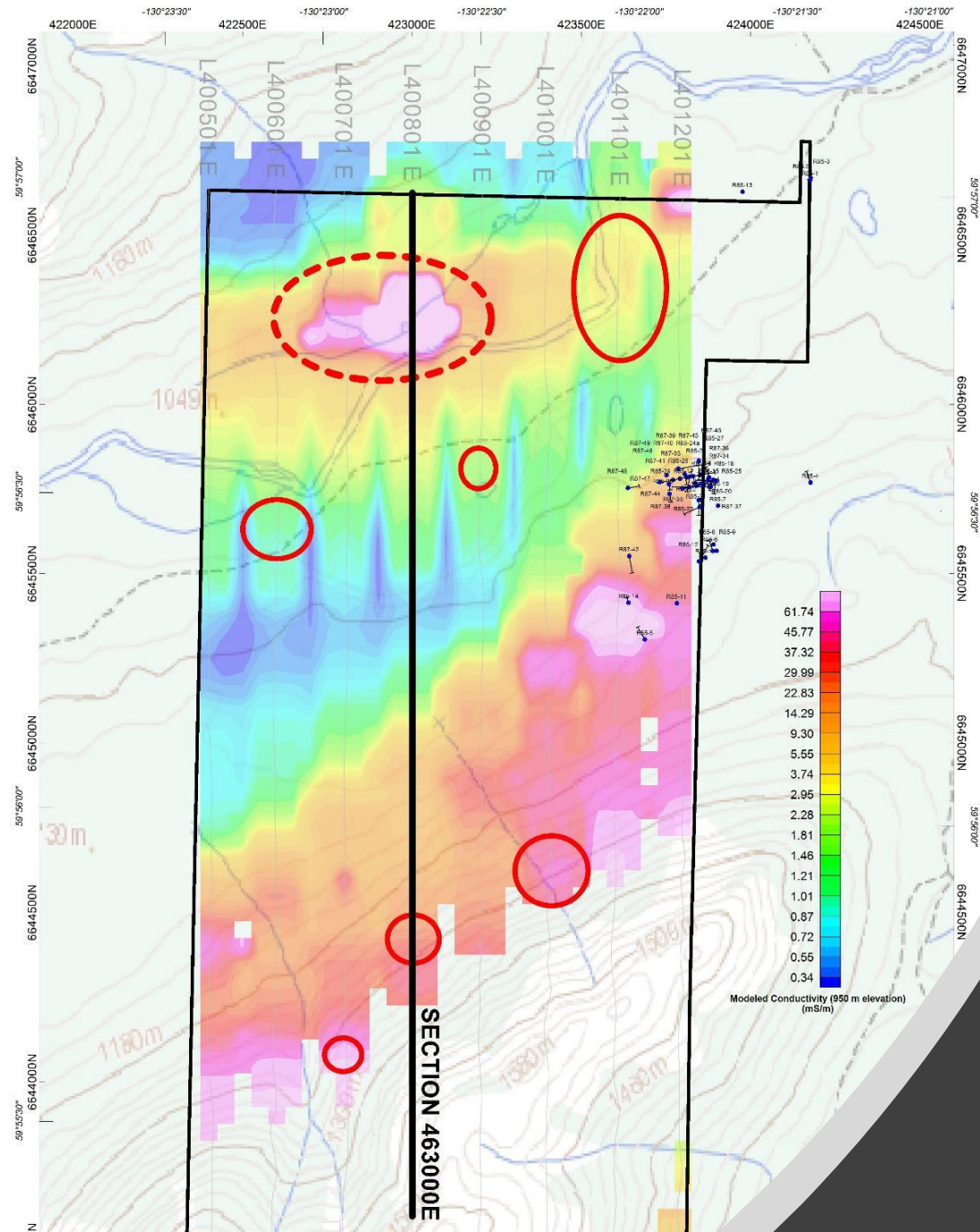
Geological Setting Same as Silvertip - A Repeated Geological Sequence

(After Coeur Mining, December 15, 2022 Presentation)

2021 SkyTEM Survey Results

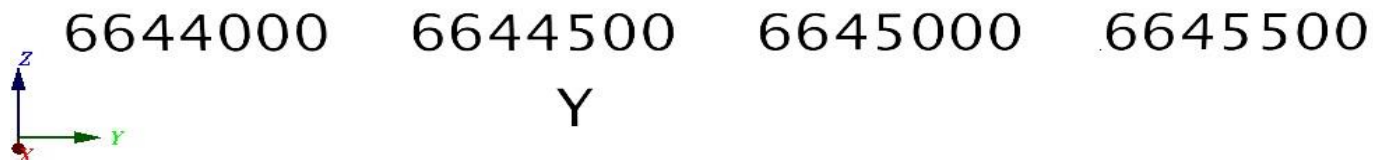
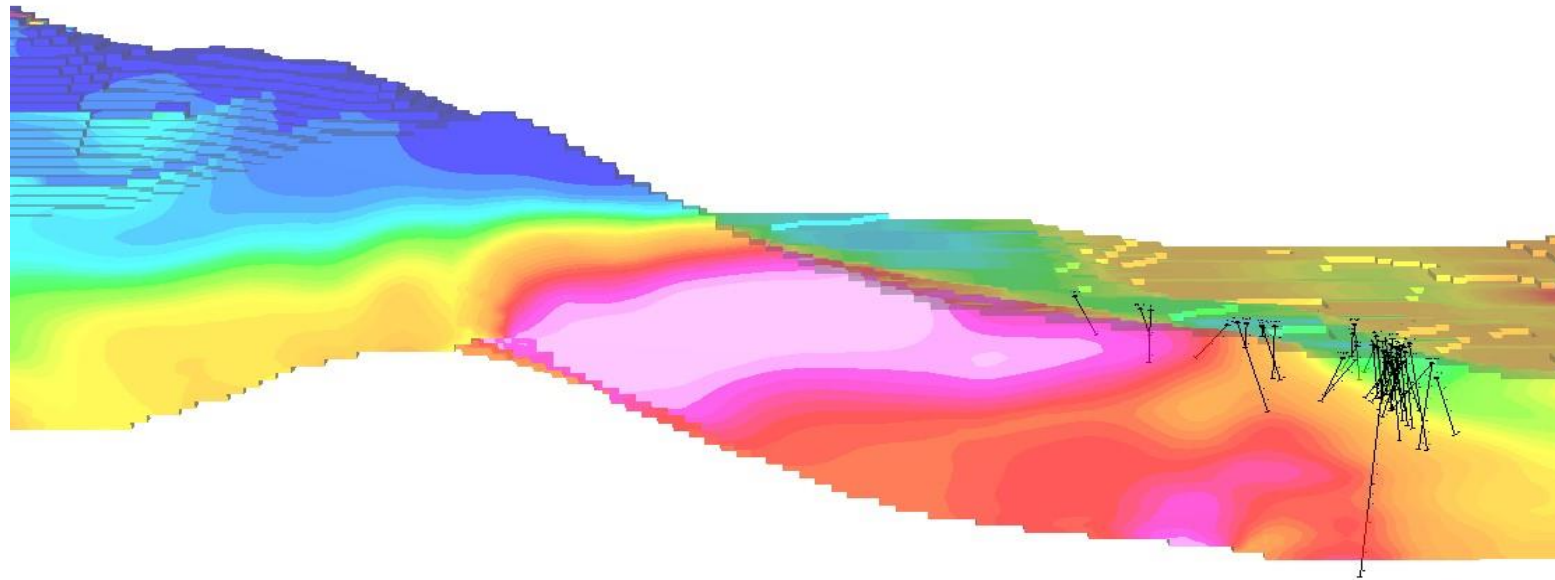
Several conductors
identified on the property





Cross Section of Targets

Conductivity Targets Missed In Historical Drilling at the Silverknife Prospect



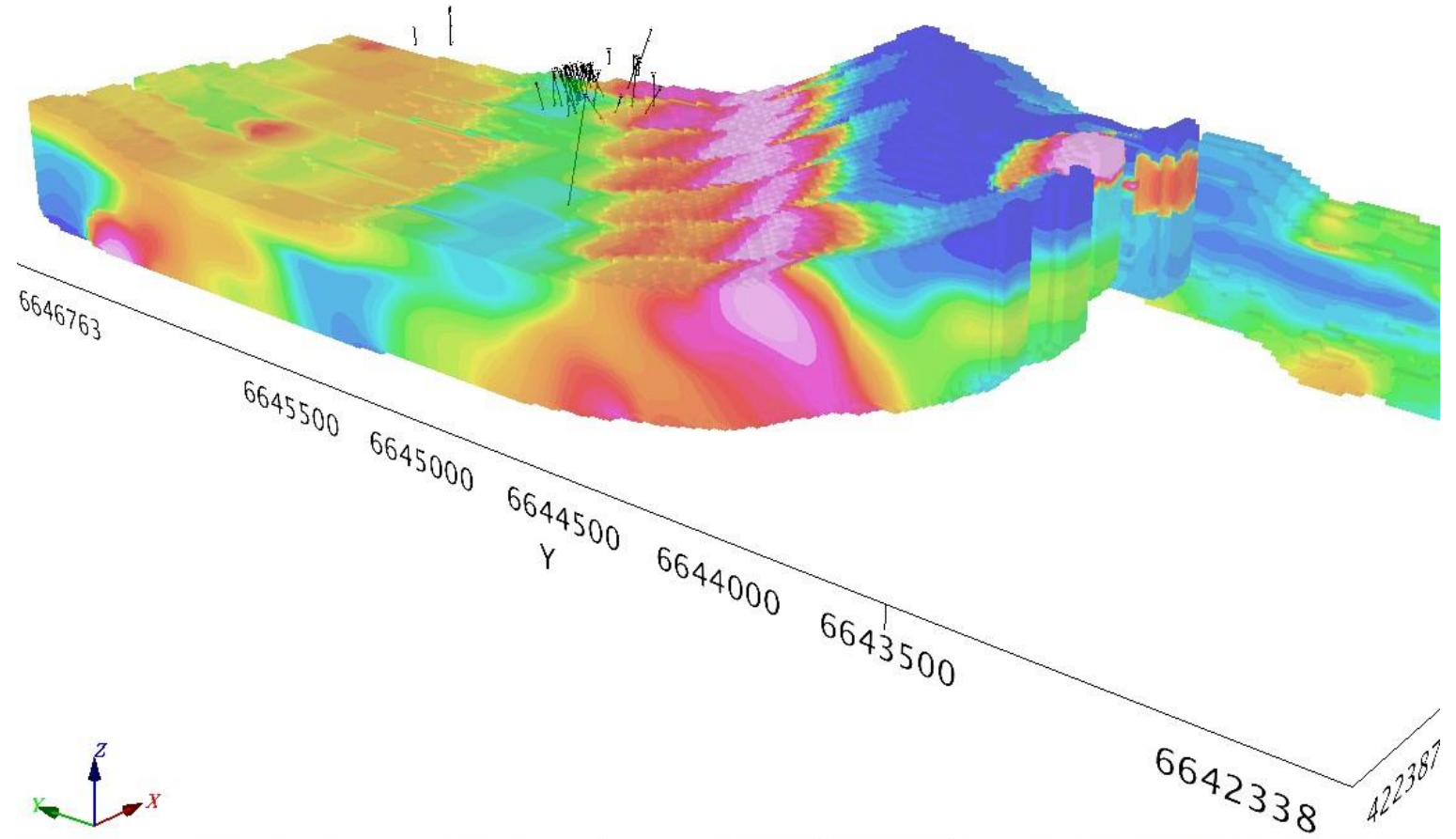
ed layer to draw new 2D objects to.

WGS 84 / UTM zone 9N

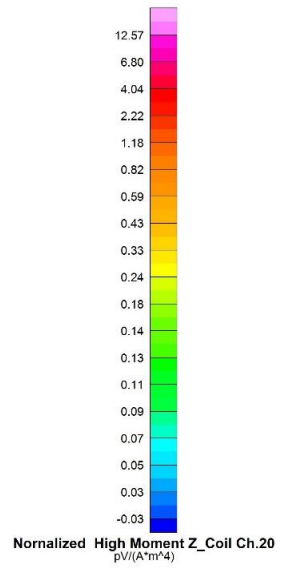
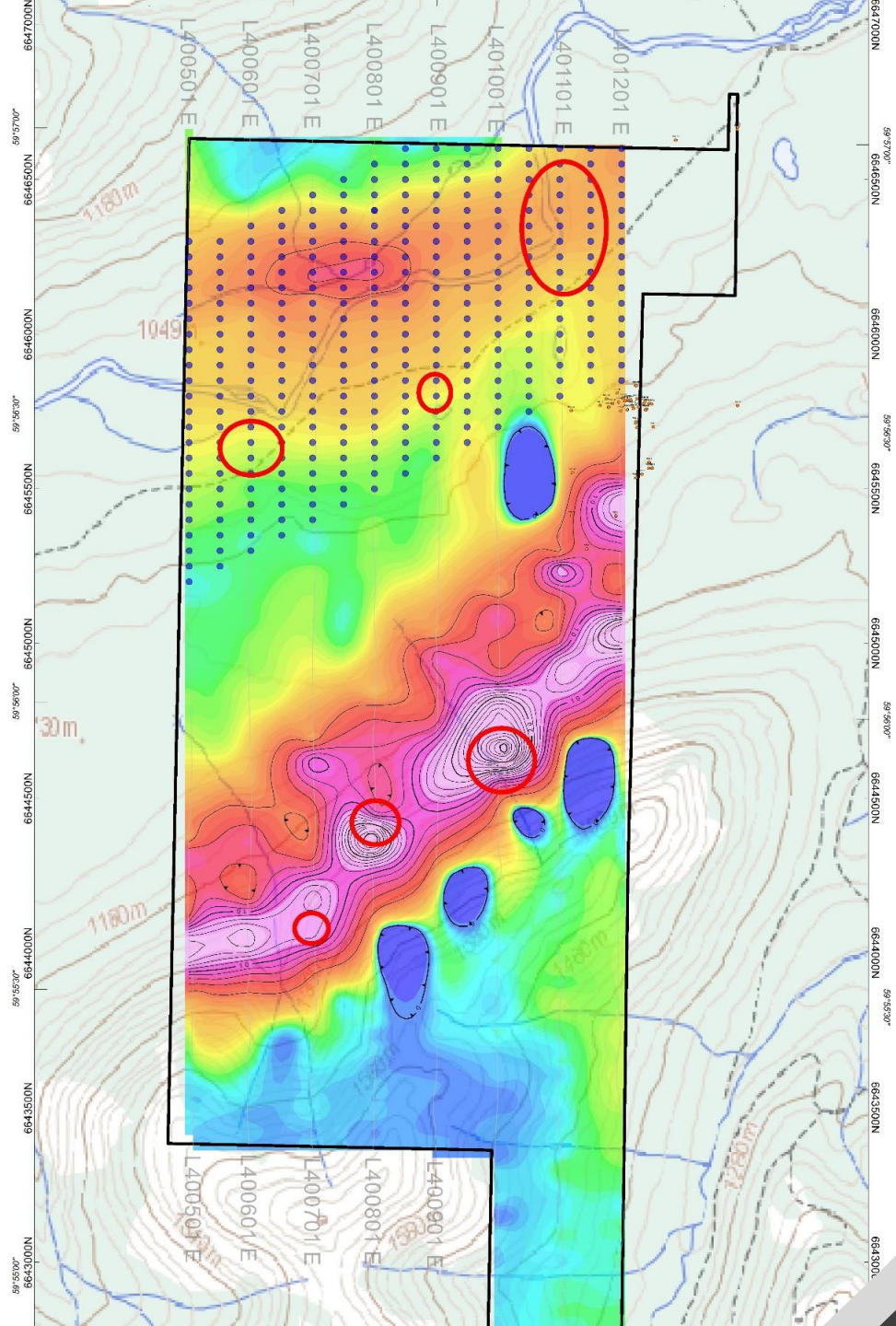
Cursor: *,* m

Incl.: 13° Az.: 270.2° LookAt: 423148.6,6644891,975.8351 m

3-D Visualization of Conductivity Anomalies



(where new 2D content will go) is indicated in bold with a special icon | WGS 84 / UTM zone 9N | Cursor: **, * m | Incl.: 23° Az.: 50.4° LookAt: 423722.4, 6645013, 575.6431 m.



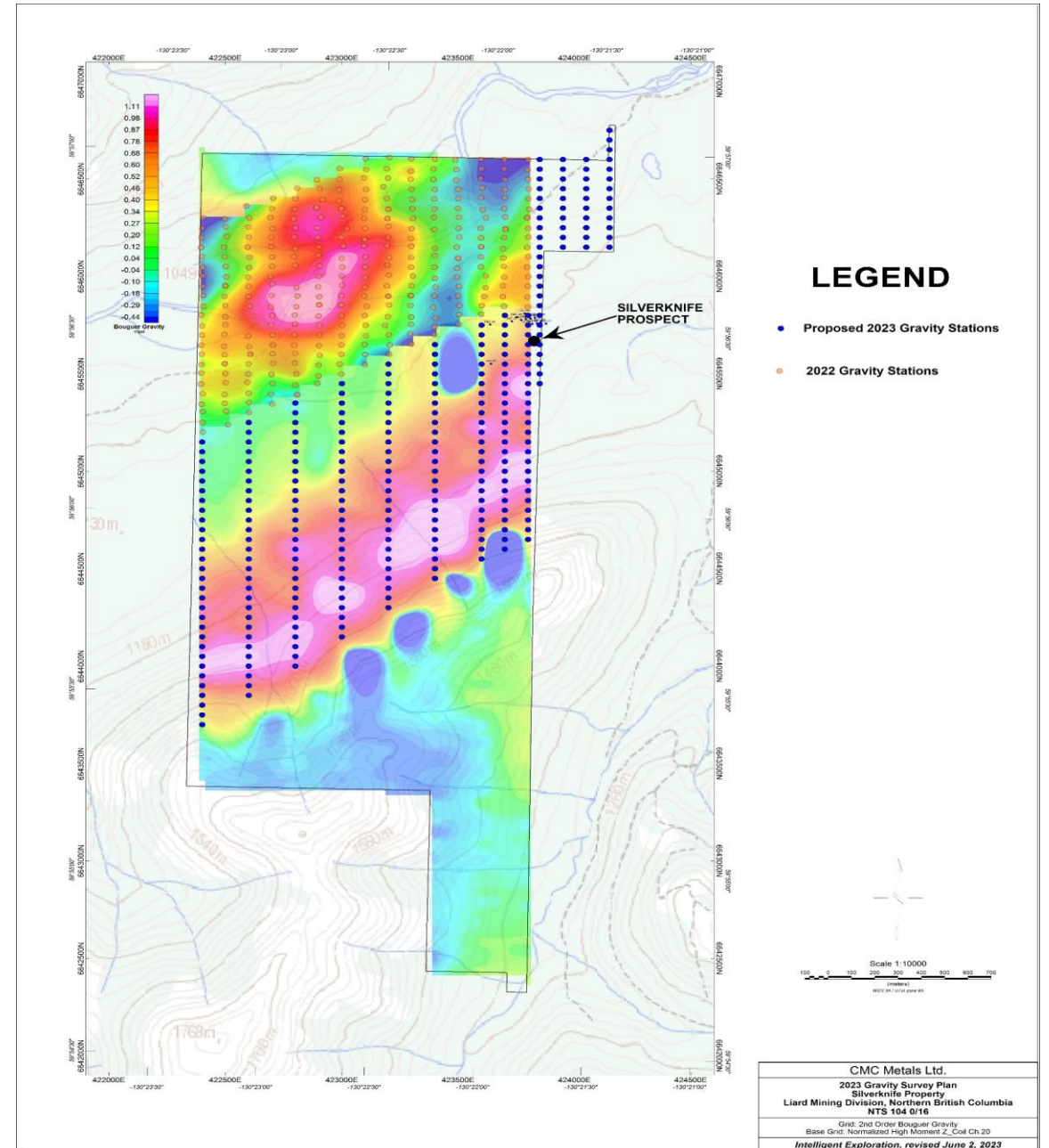
Gravity Survey Grid - 2022

2023 Gravity Survey has Started

Survey grid will cover

- Historic Silverknife Prospect
- Entire Conductivity Belt in Central portion of Property

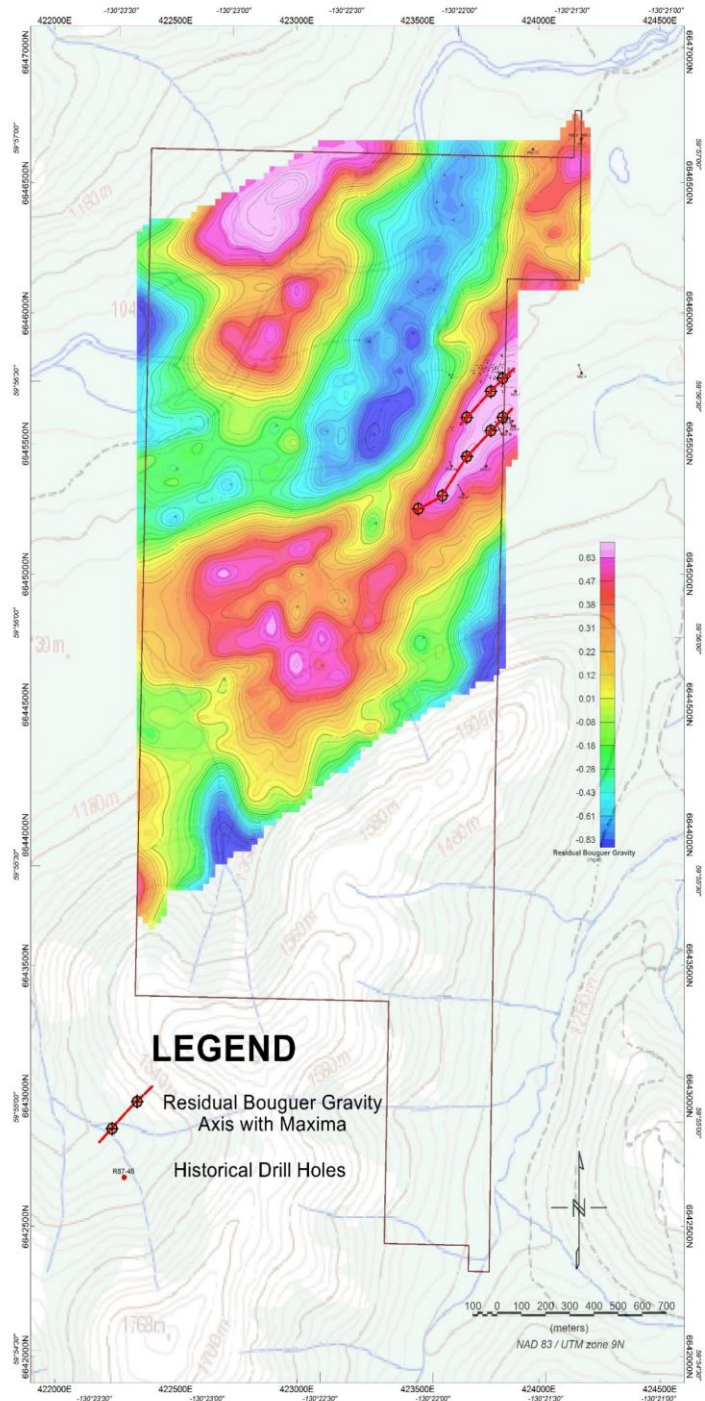
GOAL: Identify drill targets for 2024



Gravity Anomalies – Silverknife Property

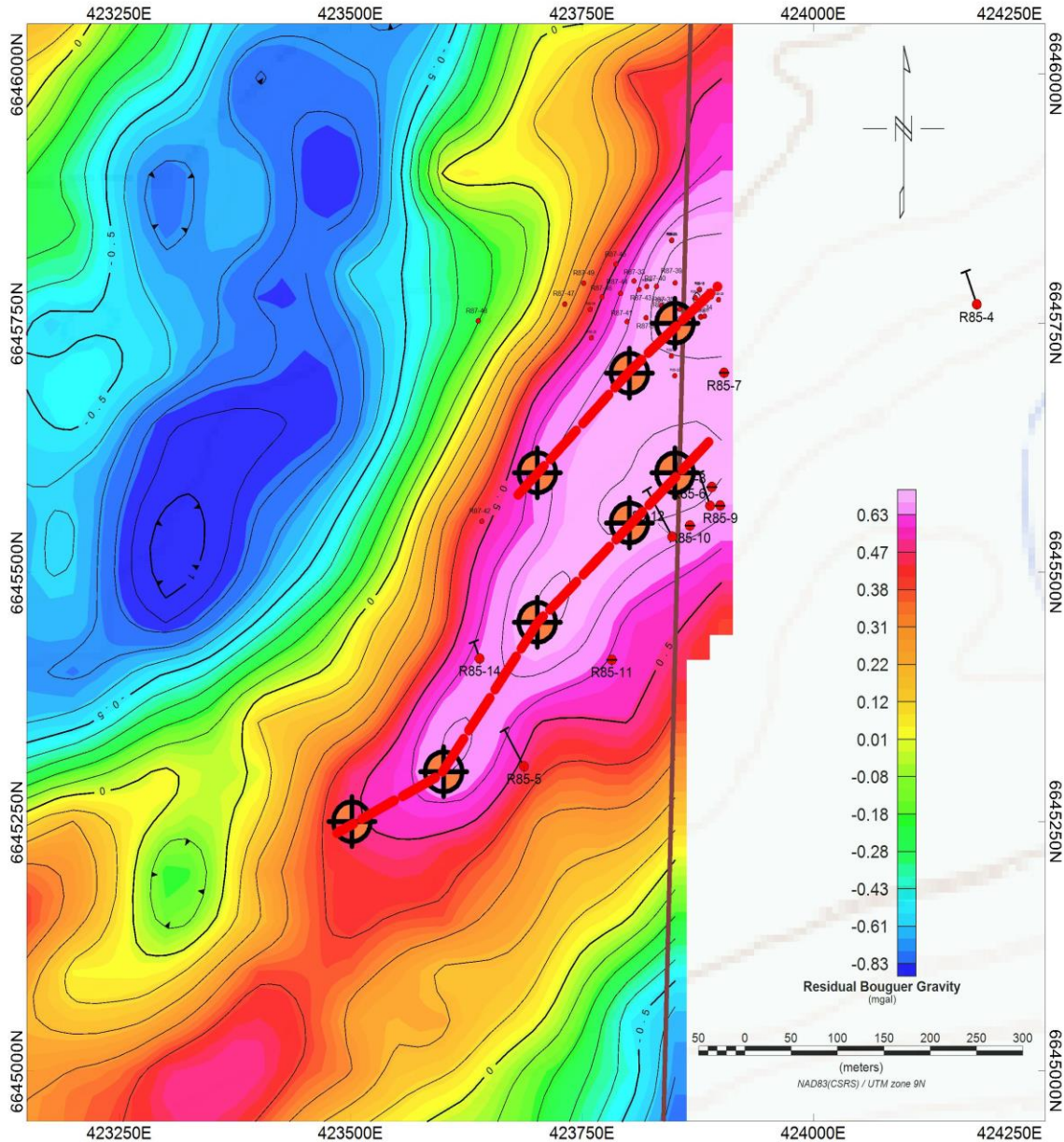
Four (4) gravity anomalies identified to date

- Northern area (to be drilled in 2024) – road construction underway
- Northeastern area
- Silverknife Prospect (preliminary drilling 2023)
- Central portion (2024 and beyond)



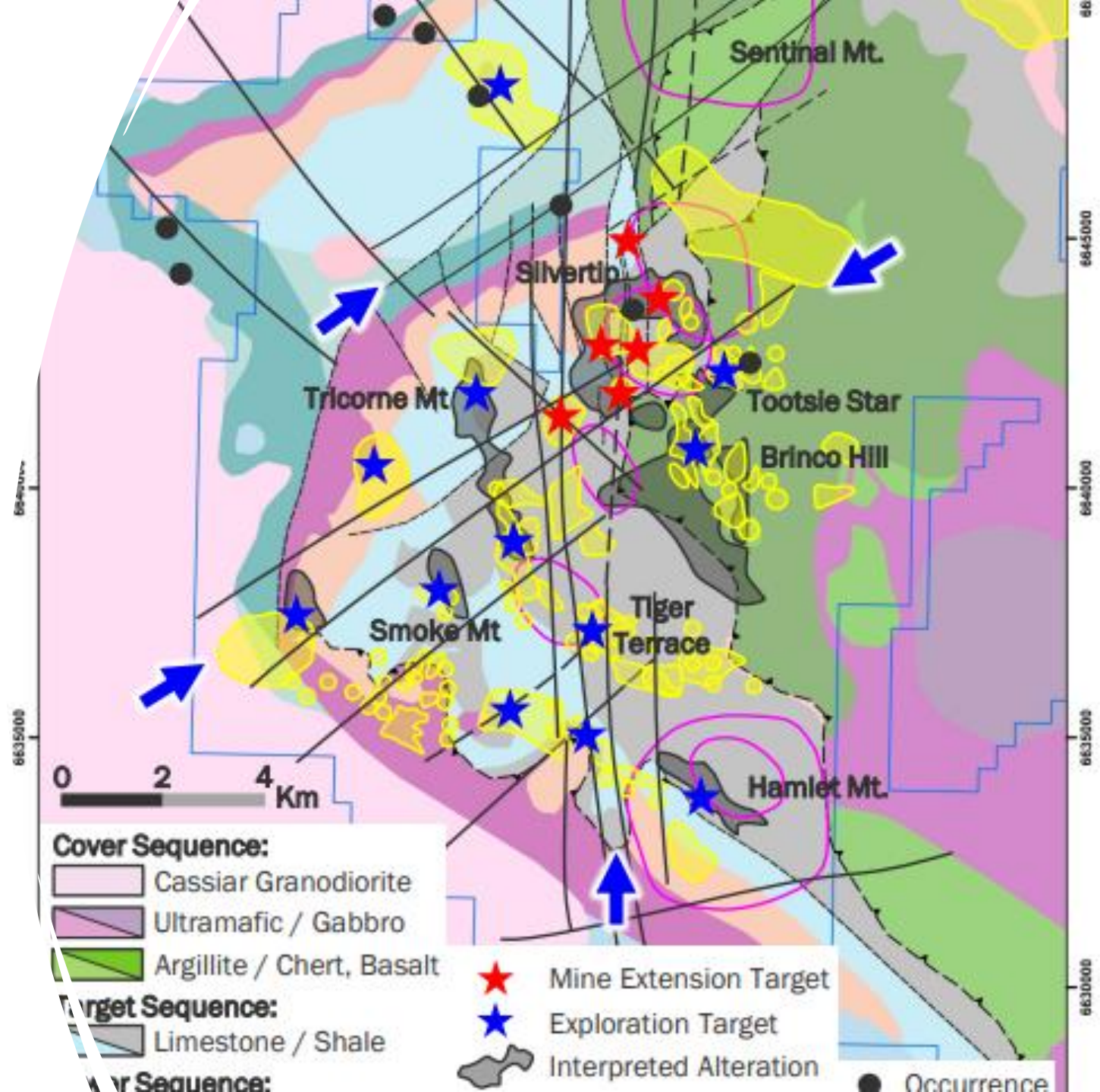
Gravity anomaly – Silverknife Prospect

- Two gravity peaks over strike lengths of 225 and 525 meters, respectively
- Preliminary drill investigations being conducted this season
- Requires more drilling in 2024 to fully investigate



Structural Setting

N-S Major Fault Structures and NE trending Structural Corridors Same Setting as Silvertip

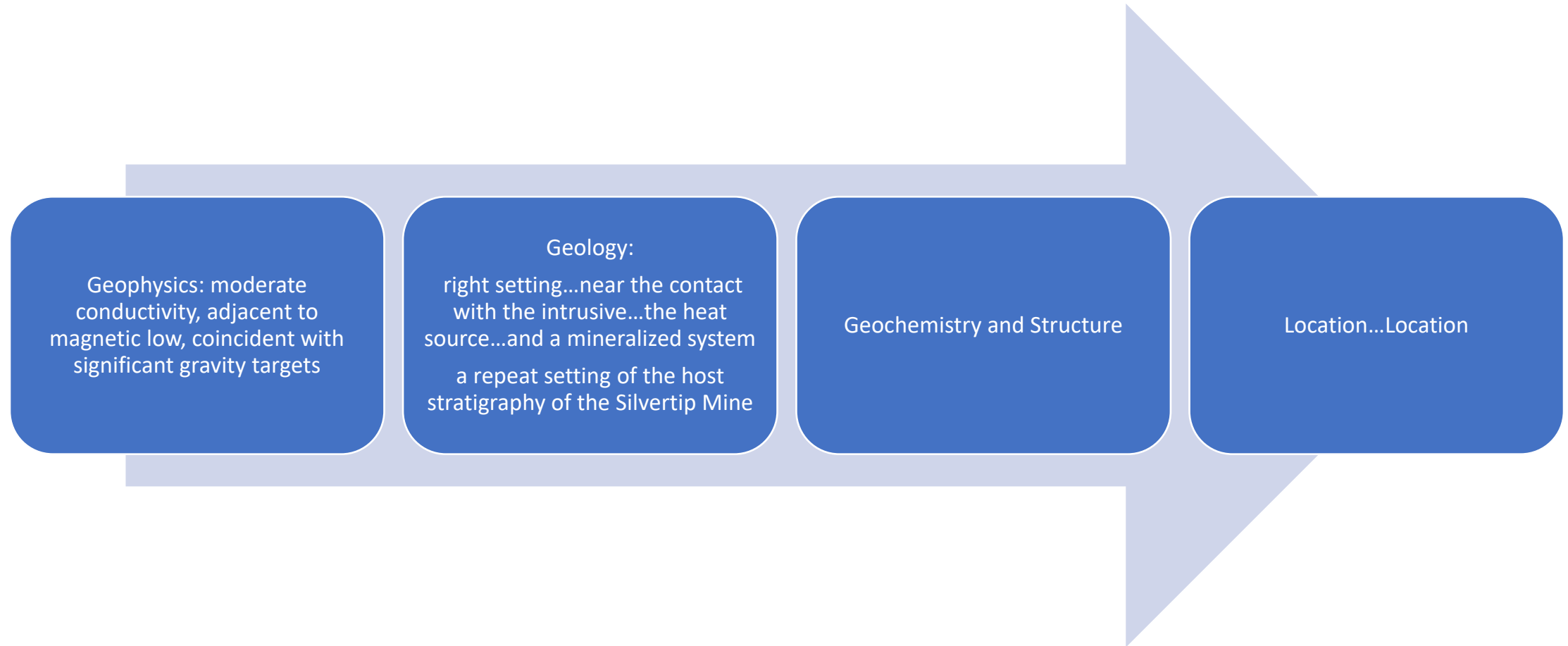


Benefits to CMC of Couer's Activity

- high level of activity in the area will generate lots of information and knowledge of the style of the deposits in the Silvertip area
- Already serving to identify new potential targets and increase overall prospectivity of properties



Silverknife – Why is it a valid drill target?



Amy – Our Future Project in the Silvertip Area

- 8 km to the west of Silverknife
- **Historic Resource: 79,849 Tonnes 367 g/t silver, 6.0% zinc, 2.8% lead**
- Recent sampling from outcrops

	Silver	Lead	Zinc	Manganese
• 4289817:	943 g/t	9.0%	2.85%	9.0%
• 4289824:	862 g/t	14.27%	0.6%	6.8%
• 4289828:	379 g/t	10.16%	<0.1%	9.1%
• 4289829:	634 g/t	14.14%	0.3%	5.4%
• 4289830:	571 g/t	18.76%	0.2%	4.7%

Proposed use of \$750,000 financing

- Complete and/or extend drilling at the Silverknife Prospect
- Complete road building into northern prospect at Silverknife to prepare for drilling in 2024 season
- Assay Silvertip Mineral Occurrences for Presence of Critical Minerals
- General Corporate Purposes

Why Buy CMC Metals Ltd. TSX-V: CMB?

- High-Risk High-Reward Play
- Excellent positioning with Silverknife, Amy and our Silver Hart properties in an Emerging and Underexplored Silver District in Canada
- Good Science - Lots of Homework
- We do what we say we are going to do...and we work hard
- WE ARE AN UNDERVALUED CHEAP STOCK



Contact



For more information, please contact

Kevin Brewer P.Geo, MBA, B.Sc (Hons), Dip. Eng
President, CEO and Director

 kbrewer80@hotmail.com

 (office) 604 602 0001

(direct) (+52) 669 198 8503

TSX-V: CMB
cmcmetals.ca